

ONE ROOF ***(One Region One Offtaker)*** ***SUKABUMI CITY***



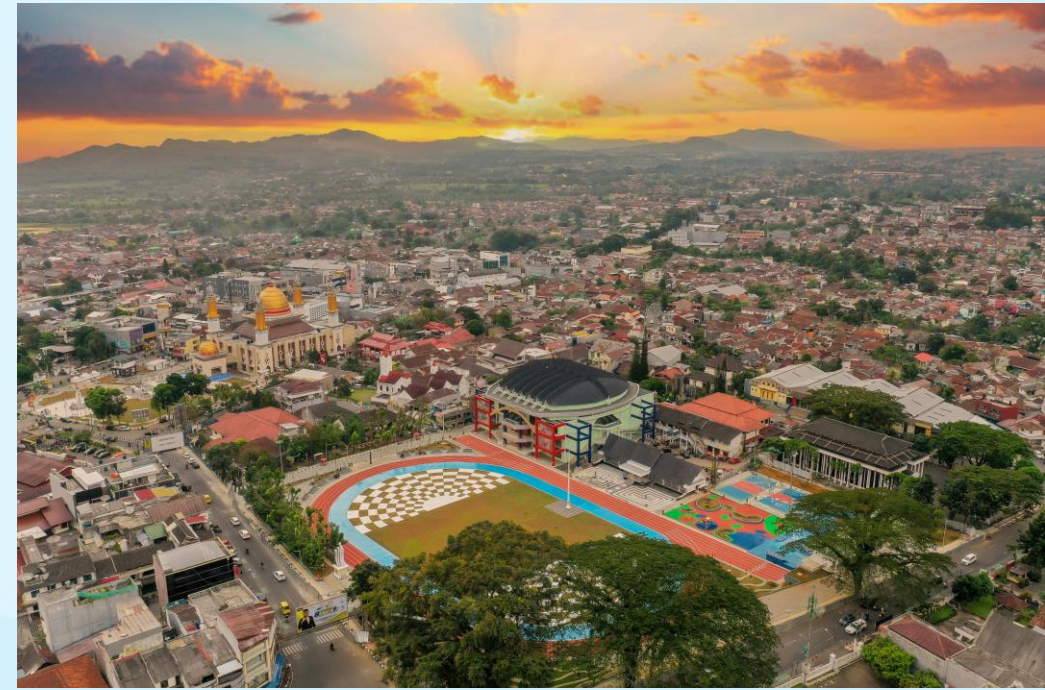
Milan Pact Webinar Series
Food Supply and Distribution
November 18th, 2022



**DEPARTMENT OF FOOD SECURITY, AGRICULTURE AND
FISHERIES SUKABUMI MUNICIPALITY**

SUKABUMI CITY IN FIGURES

- The area of Sukabumi City is 48 Km²
- Population = 353.631 People
- The area of agricultural land in Sukabumi City is only approximately 28% of the city's area, which is 1,371 ha
- Sukabumi's Grain Production is 21.613 tones/year or equivalent with 11.360 tones of rice.

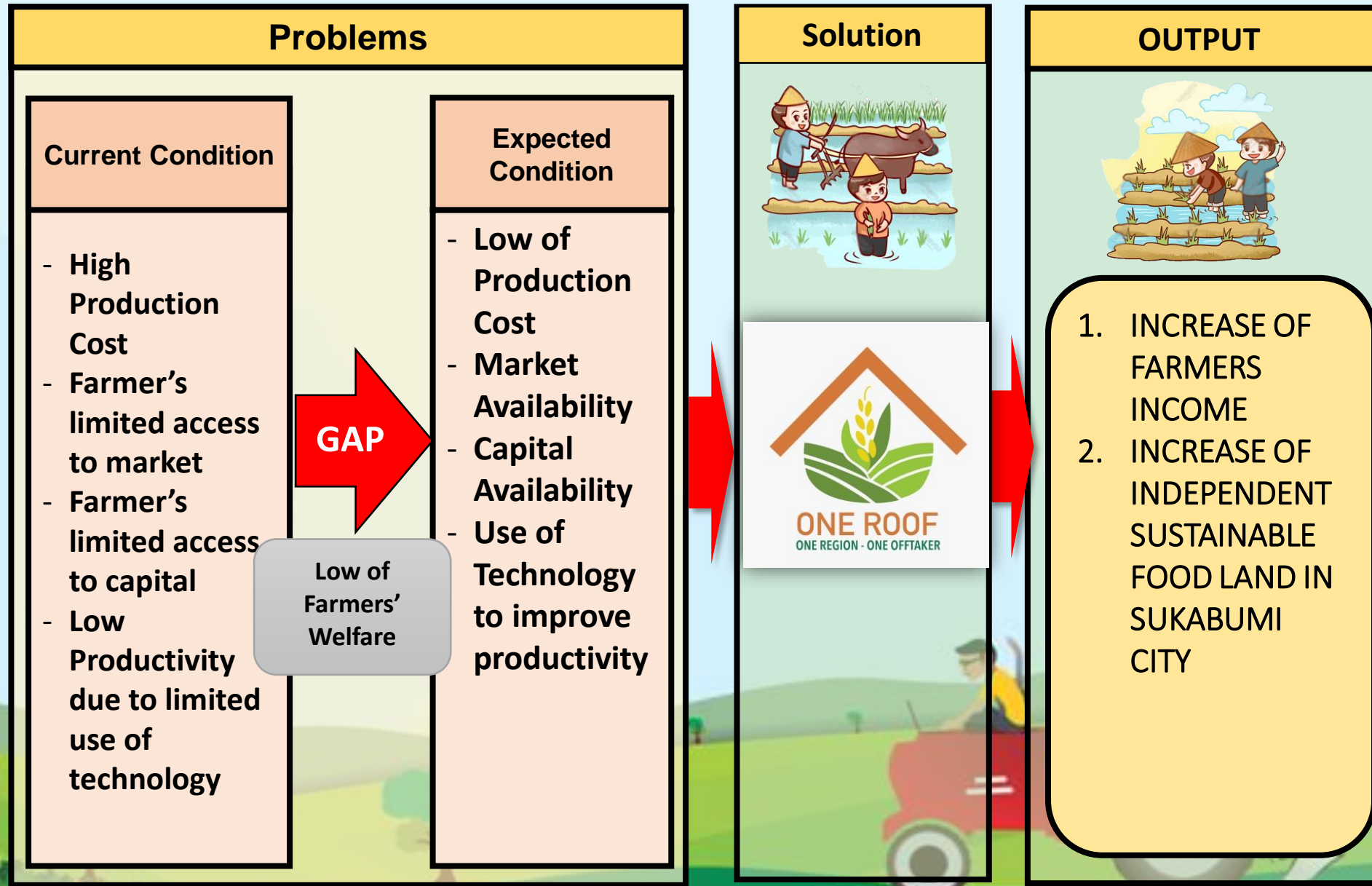


CHALLENGES IN FOOD SUPPLY IN SUKABUMI

- Sukabumi is highly dependent on food supplies from other regions. Its Food Production (Rice) is only able to meet approximately 32% of Sukabumi's food needs (Rice).
- Massive conversion of agricultural land threaten the sustainability of food supply in Sukabumi City. In the last 10 years, paddy fields have decreased by an average of 2.2% per year.
- Farmers, as food producers, are the aging generation. 60% of farmers in Sukabumi City are over 50 years old, while only 5% of young farmers (under 30 years old). The low interest of the younger generation in the agricultural sector because agricultural sector is seen as less attractive and promising business sector.



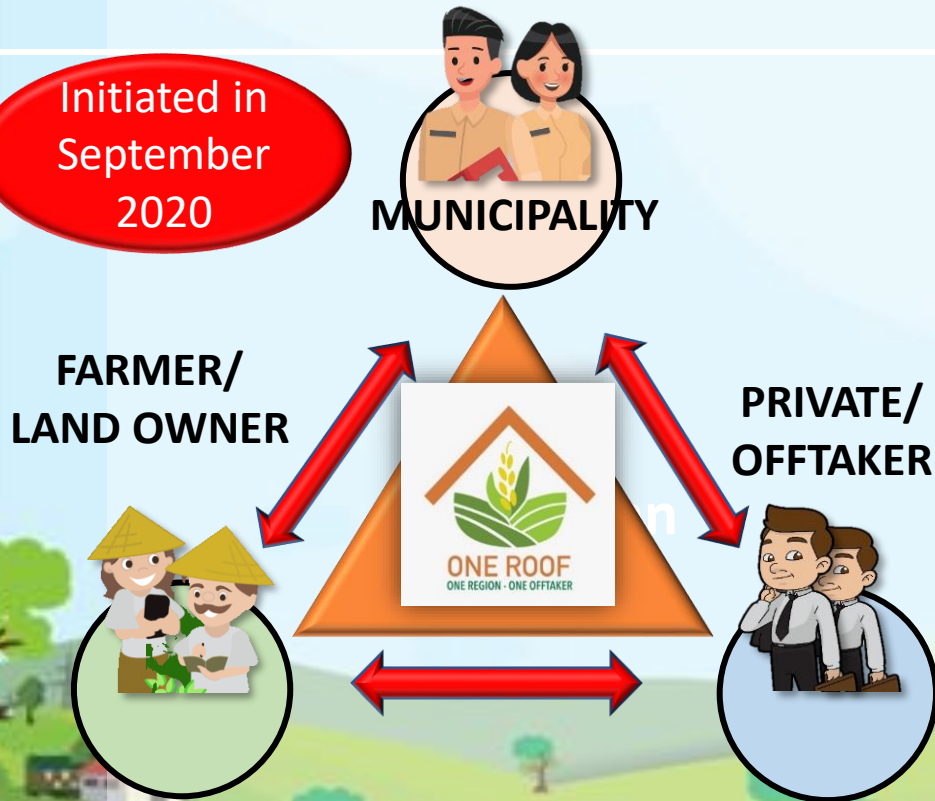
BACKGROUND



WHAT IS ONE ROOF (ONE REGION ONE OFFTAKER)

One Roof is government policy to maintain food supply through improving farmers welfare.

Collaboration of 3 Pillars



The One Roof (One Region, One Offtaker) concept is the concept of establishing One Guarantor for One Region which depend on the Offtaker's capability.



One Region referred to an agricultural area, village, sub-district, or city depend on the Offtaker's capability to facilitate farmers.



One Offtaker is someone who responsible for establishing partnerships with farmers in certain areas. Offtaker become guarantor for the farmer in terms of financing the production and marketing agricultural products of farmers.



Farmers dan Offtaker make a partnership agreement in Production of Paddy

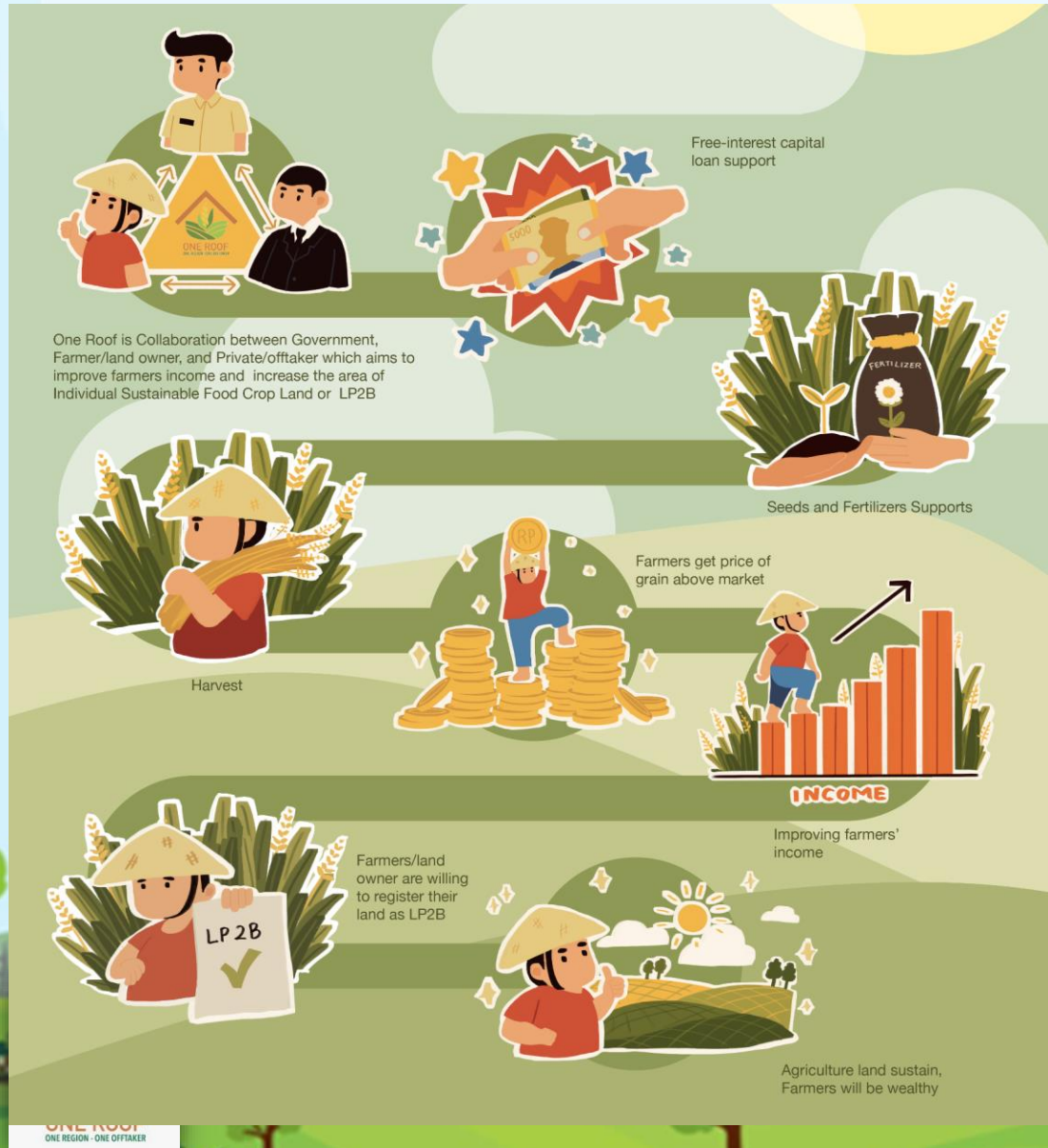


One Roof Farmers are persuade to register their land as Sustainable Food Land (we called it LP2B)



Farmers participating in the independent LP2B program are receive facilitation and incentives from the Government (Seed, Fertilizer and insurance)

IMPLEMENTATION



Program
Sosialisation



Partnership signing



Marketing by Offtaker



Seed and Fertilizer aids



Harvest



Capital Loan from
offtaker

IMPLEMENTATION



BENEFICIARIES



For Farmers and Land Owners:

1. financing facilitation for rice production activities.
2. Market guarantee for grain produced.
3. Reasonable price of grain from offtaker



For Municipality

1. Increasing of Independent LP2B Area.
2. Guarantee of food (rice) availability.



For Offtaker

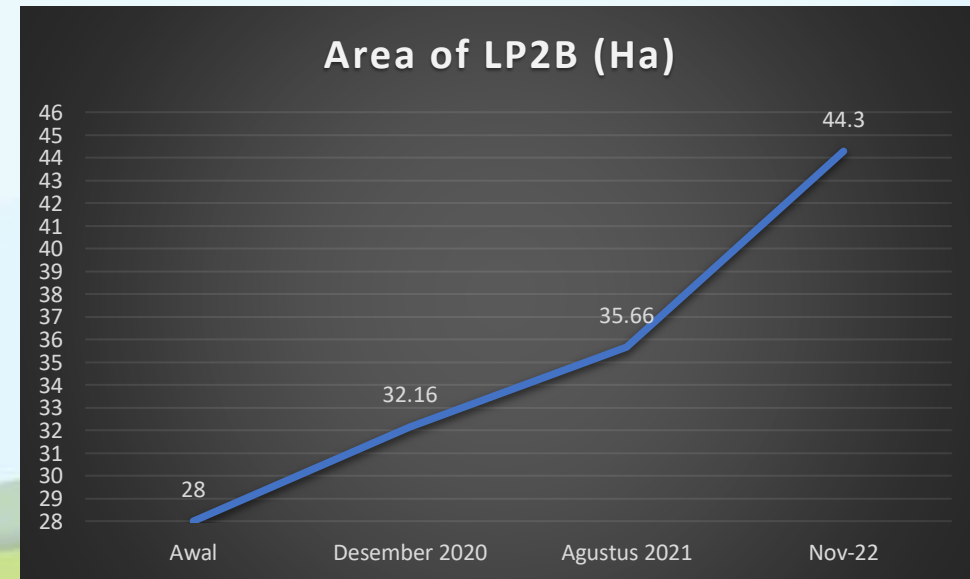
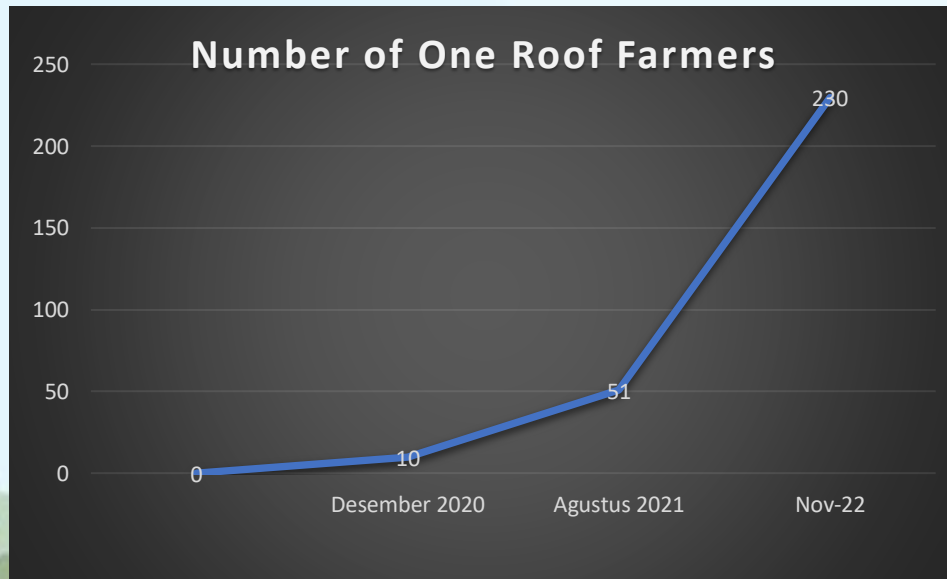
- Continuity Guarantee of agricultural products.
- Get Priority in municipality food programs



IMPACT OF ONE ROOF



NO	Deskripsi	Unit	Before	After	(+/ -)	Percentage (%)
			Pilot Project	November 2022		
1	Number Of Farmers	Orang	10	230	220	22000
2	Number of Offtaker	Lembaga	1	3	2	200
3	farmer's income estimation	Rp/Ha/Harvest	8.284.000	16.100.000	7.816.000	94
4	Area of LP2B	Ha	28	44,3	16,3	58



ROLE OF ONE ROOF FOR FOOD SUPPLY IN SUKABUMI

- Maintaining food supply is not only in di downstream, but also must start in the upstream (production)
- Increased welfare and income will motivate farmers and young people to work in the agricultural sector so as to ensure sustainable food production.
- Maintaining Agriculture land through LP2B Program (Agriculture land cannot be converted to non agriculture land for 20 years) is an effort to ensure the sustainble food production.
- Some product bought by offtaker from farmers is distributed by municipality through several municipality programs such as Mobile Cheap food Market (GPM LING) and Food for Regional food Reserve (CPPD).



ROLE OF ONE ROOF FOR FOOD SUPPLY IN SUKABUMI



MOBILE CHEAP FOOD MARKET (GPM LING)

- GPM LING is a collaborative action between municipality and private/business sector in providing quality and cheap food for the community, especially for poor households.
- Food sell in GPM ling is strategic staple food such as rice, eggs, palm oil, sugar, chicken, potato and vegetables.
- Some Product (Rice) for GPM LING taken from the One Roof Offtakers.
- Price of product in GPM Ling is 12% cheaper than the market price.
- In 2021, We held GPM Ling in 11 villages (are identified more prone to food insecurity based on FSVA(food security Vulnerability Atlas)) with 1.302 beneficiaries (Rice 2.645 kg, eggs 3.125 kg, palm oil 300 L , potato 2000 kg, Sugar 270 kg, Chicken 35kg dan Vegetables 270Kg)
- In 2022, we allocated 20 times GPM ling (15 from municipality budget and 5 times from provincial budget).



ROLE OF ONE ROOF FOR FOOD SUPPLY IN SUKABUMI



MOBILE CHEAP FOOD MARKET (GPM LING)



ROLE OF ONE ROOF FOR FOOD SUPPLY IN SUKABUMI

REGIONAL FOOD RESERVE (CPPD)

- Ensuring food availability for households affected by disasters or emergency conditions (Flood, land slide, fire, crop failure and so on) and have potency for food insecurity.
- We supply Rice from our food reserve for the household affected by disasters.
- Cooperation with Offtaker for the Procurement of Rice for CPPD
- 2021, Regional Food Reserve = 12,5 tones
Distribution = 10,5 tones
- 2022, Regional Food Reserve = 35,2 tones
Distribution = 9,03 tones



ROLE OF ONE ROOF FOR FOOD SUPPLY IN SUKABUMI

REGIONAL FOOD RESERVE (CPPD)





THANK YOU



DEPARTMENT OF FOOD SECURITY, AGRICULTURE AND FISHERIES
SUKABUMI MUNICIPALITY