



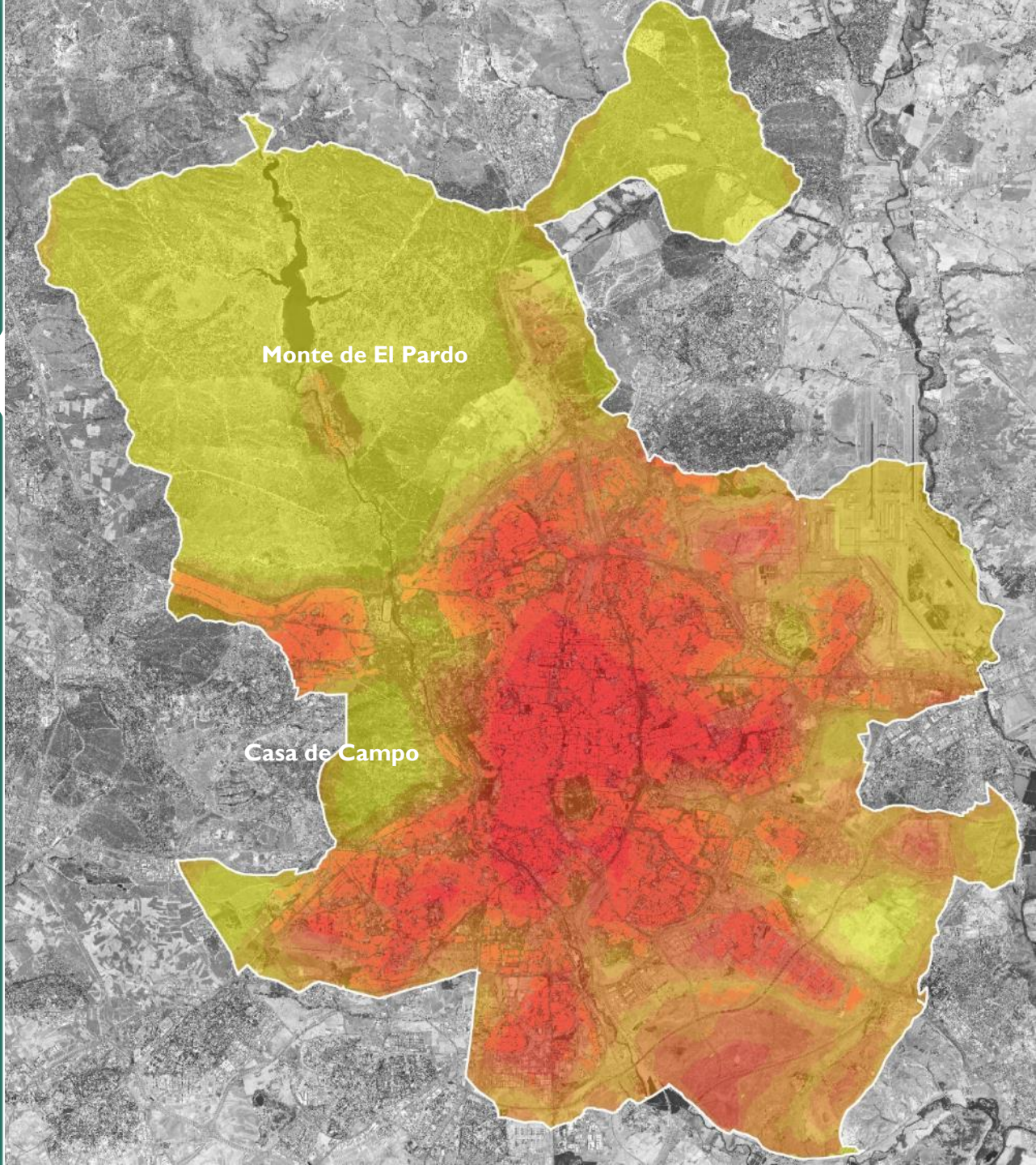
NICOLAS GHARBI

PRINCIPAL ADVISOR CITY DIPLOMACY AND INTERNATIONAL AFFAIRS

GHARBIN@MADRID.ES

<https://www.youtube.com/watch?v=YirKpUIOm0k&t=9s>

Urban heat island



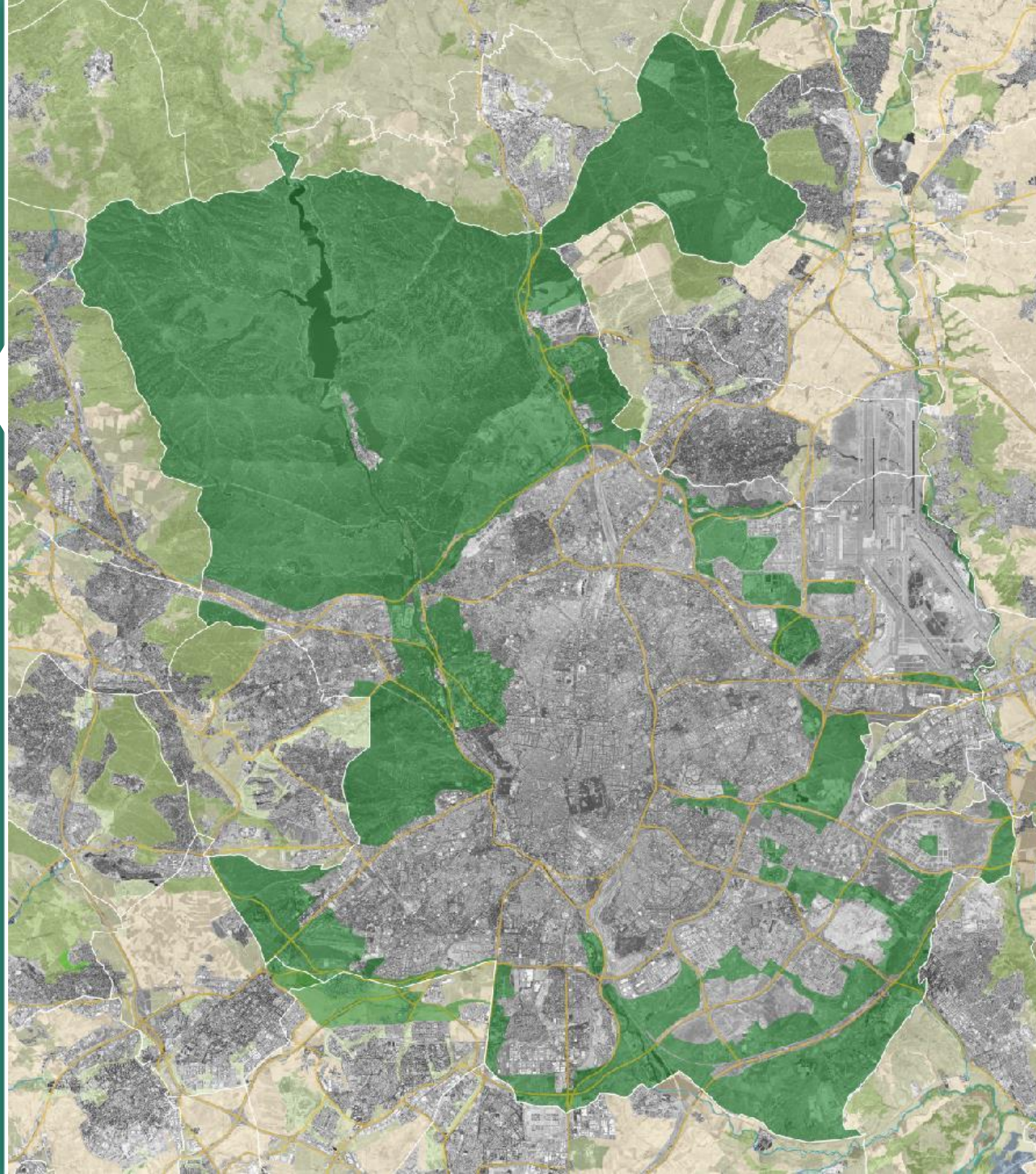
**The average
temperature in
Madrid has increased
2°C in 30 years.**

**Maximum
Temperature in
summer higher than
38°C**

**Longer and more
frequent heat waves**



Data



Madrid:
22,83 m² green area (ga)/ inhab.

WHO recommendation:
10 - 15 m² ga / inhab.

1 Vitoria	26,76 m ² ga / inhab.
2 Pamplona	26,00 m ² ga / inhab.
3 Logroño	24,00 m ² ga / inhab.
4 Sevilla	23,00 m ² ga / inhab.
5 Madrid	22,83 m² ga / inhab.

National ranking of green areas per inhabitant
m² ga / inhab.

**A green infrastructure
achieving an
interconnected system
will provide more
environmental benefits**



BOSQUE
METROPOLITANO

Context

The last time Madrid was surrounded by forests was in the **1500s** when thickets of mushroom-shaped holm oaks buffeted the not-yet Spanish capital.

In the centuries since, many woodlands have given way first to farms and then the **subdivisions and industrial zones of a modern metropolis.**

Madrid's outward surge – **population doubled** during the last 20-year of last century – has fed **erosion and driven away wildlife.**

But Madrid could soon be ringed by forests again. We launched a drive to connect a series of existing woodlands, creating a **75km-long green belt around the city and** the forest would cover **35,000ha.**

The main objectives are the mitigation of urban heat island to ensure that our city is more resilient against climate change, to improve biodiversity, air quality as well as social cohesion and quality of life.





The last time Madrid was surrounded by forests was in the 1500s when thickets of mushroom-shaped holm oaks buffeted the not-yet Spanish capital. In the centuries since, many woodlands have given way first to farms and then the **subdivisions and industrial zones of a modern metropolis.**

Madrid's outward surge –population doubled during the last 20-year of last century – has fed erosion and driven away wildlife. will be a **75 km green belt** embracing the city that will entail more than **2.300 ha.** of new urban forests, connections with existing areas and the planting of more than **2 Million trees.**

The Urban Forest is an ambitious initiative of the Madrid City Council that will strengthen the city's commitment to the environment and its image as an urban centre that values sustainability. In line with SDGs, NUA and the EU Green Deal it Will be cirtical to achieve **DeCO2 objectives by 2030 (-65%) and neutrality by 2050.**



More than **2** million
new trees

2.364 ha of new
forest

300 ha
vacant plots in neighborhoods
for agriculture

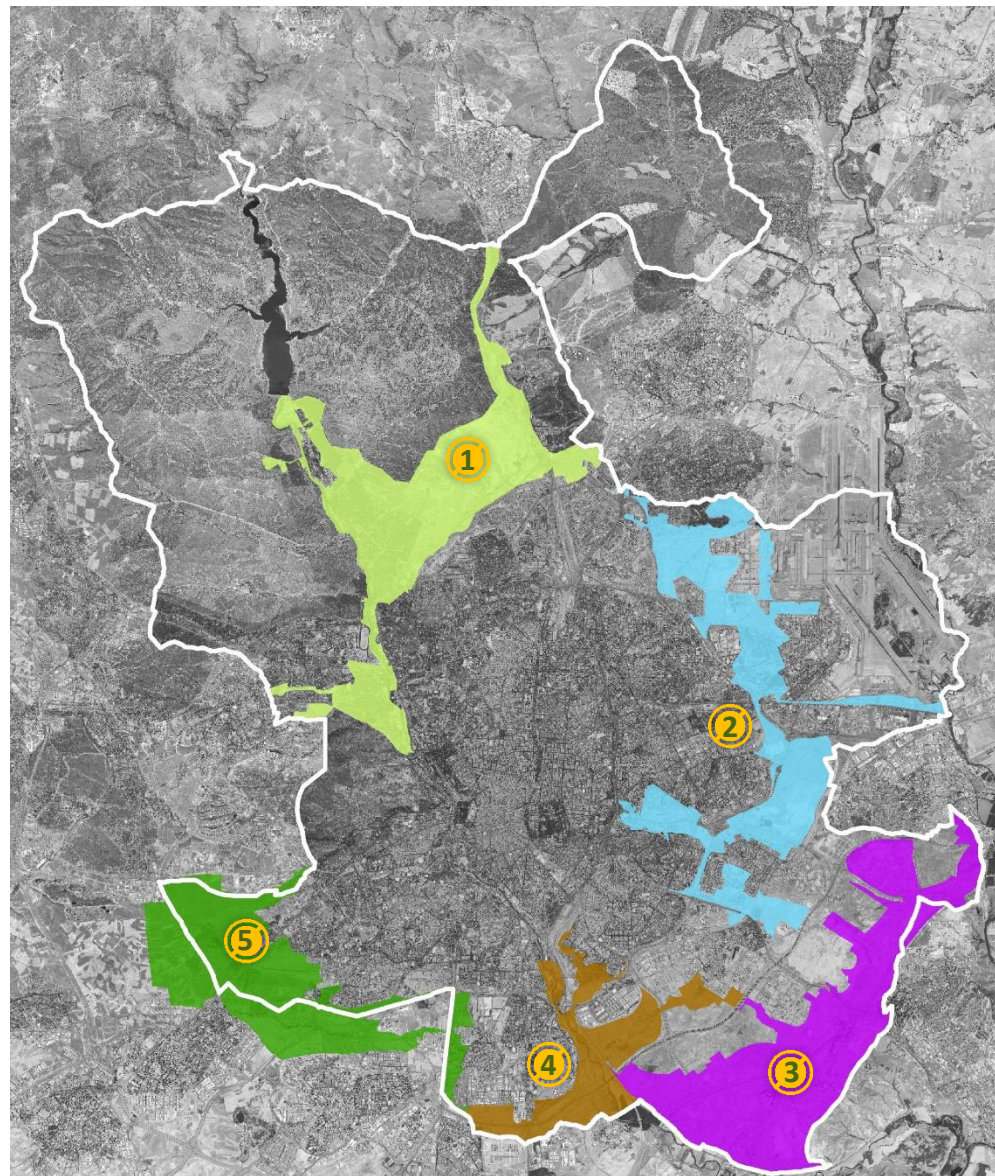
***Trees and forests ensure that
our city is economically,
socially and environmentally
more sustainable and
resilient***





BOSQUE
METROPOLITANO

Target areas



INTERNATIONAL CALL FOR IDEAS

1. BETWEEN NATURAL FORESTS

Connections of the monte de El Pardo with the monte de Valdebebas and Casa de Campo. Continuity of the river axis of the Manzanares River

2. JOINING URBAN PARKS

Connections of the metropolitan free spaces system, Valdebebas, Fairgrounds, Wedge of O'Donnell, Vicalvarada, Valdebernardo and Cerro Almodóvar with Nueva Centralidad del Este

3. THE SOUTHEAST GREEN RING

Improvement of the free space systems of the southeast growths, from the Cerro de la Herradura to the Cantiles del Manzanares

4. THE SOUTH FLUVIAL PARKS

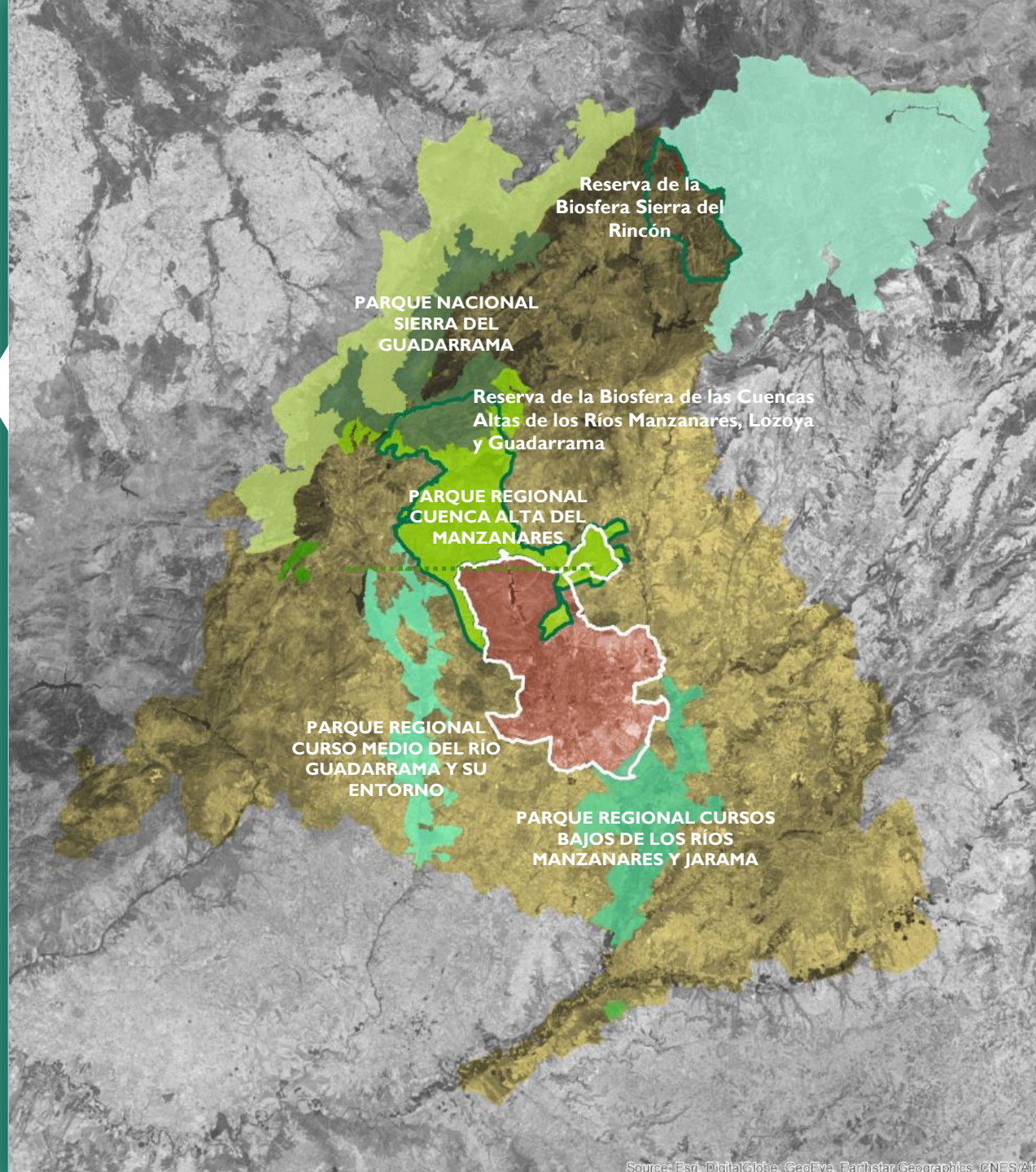
Connections of the river systems of the Manzanares river and La Gavia stream with the integration of large peripheral pieces of free spaces in Entrevías, La Atalayuela, Mercamadrid and Butarque

5. IN THE METROPOLITAN RING

Integration of the southwest metropolitan system (Getafe, Leganés, Alcorcón) with the Casa de Campo. Improvement of Meaques stream river environments



Regional Natural Parks



Relying on the green areas of the municipality, a corridor will be formed that connects with the protected natural areas of the Community of Madrid



A multi-scale Project



A multi-scale Project:

Metropolitan level: a large forest of 35 000 ha.

Locally: a green strategy by mean of urban agriculture.

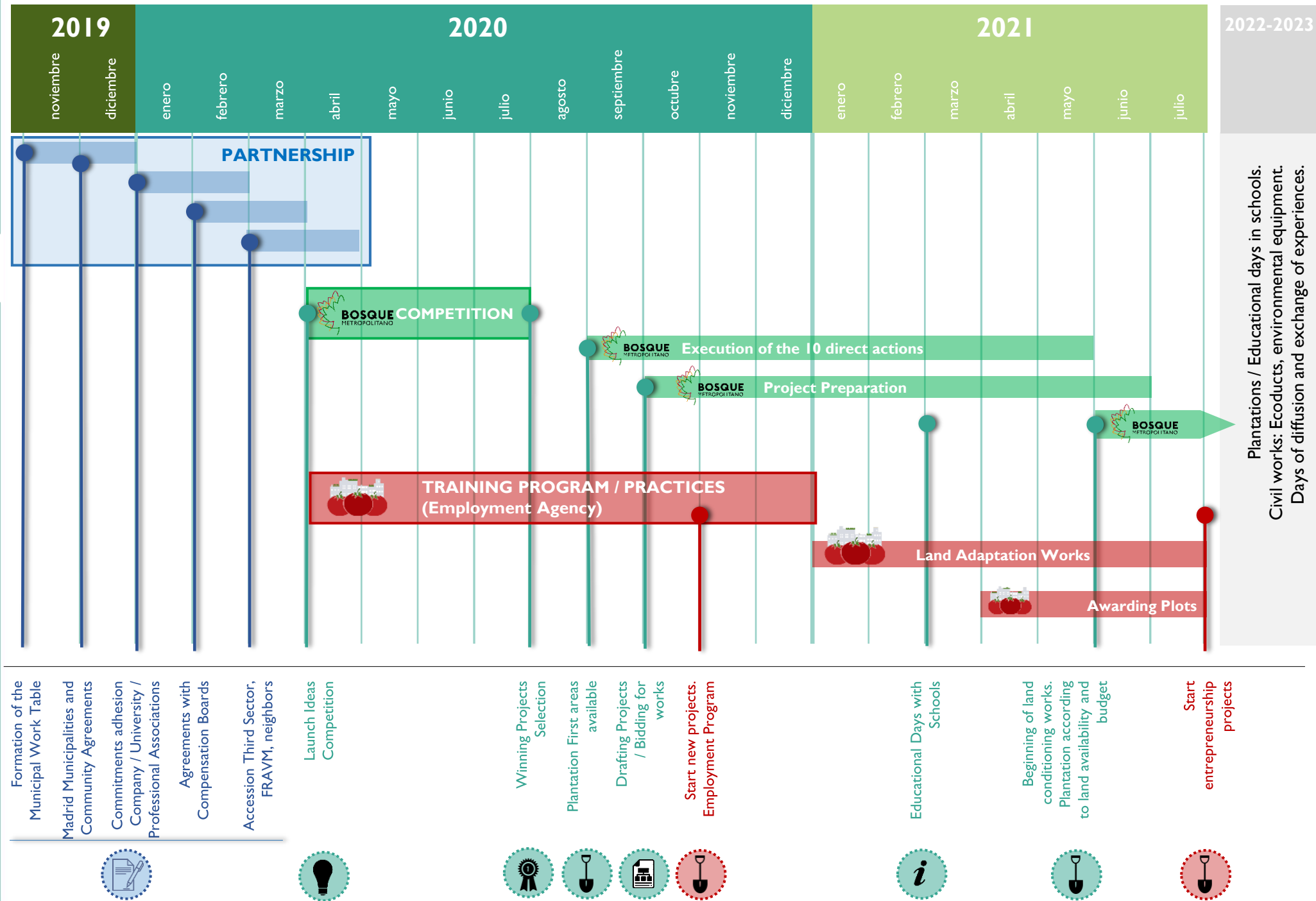


Action plan



LAND CATEGORY	ACTIONS	MAIN PROJECTS
Consolidated Urban Land	<ul style="list-style-type: none">Obtain property of some areasIntensify vegetation	<ul style="list-style-type: none">Manzanares Sur ParkM-40 Ring road Reforestation
Developing Land	<ul style="list-style-type: none">Anticipate occupation and reforestation	<ul style="list-style-type: none">Southeast 1.000 ha. Forest
Land for future Development (SUNS)	<ul style="list-style-type: none">Anticipate occupationAuthorizations of use	<ul style="list-style-type: none">Dehesa Campamento Park, Arroyos Meaques ValchicoRejas Park
Rural and Protected Land (SNUC y SNUP)	<ul style="list-style-type: none">“Periurban Park”Plan for Protection and ImprovementLand purchase	<ul style="list-style-type: none">New Metropolitan Forest Alcorcón – Leganés – MadridValverde Periurban ParkSureste Periurban Park

Timetable



Plantations / Educational days in schools.
Civil works: Ecoducts, environmental equipment.
Days of diffusion and exchange of experiences.

A collective challenge, a partnership response





Current steps



IMPLEMENTING THE RESULTS OF THE INTERNATIONAL CALL FOR DESIGN AND ACTIVITIES

CONNECTION WITH MAIN POLICIES AND PROJECTS OF THE MUNICIPALITY TO REACH DESCARBONIZATION OBJECTIVE

AGREEMENTS WITH PRIVATE LANDOWNERS

SPONSORSHIP OF PRIVATE COMPANIES

SETTING CITIZEN ASSOCIATION INVOLVEMENT MECHANISMS

SETTING UP A DEDICATED COORDINATED STRUCTURE



Financing strategy



Direct benefits:

- ☐ The forest will have the capacity to absorb **170,000 tons of CO2**.
- ☐ Filtering pollutants
- ☐ Decrease urban heat
- ☐ Promote urban biodiversity and restoring ecosystems and animal migration routes
- ☐ Noise reduction
- ☐ Foster environment education
- ☐ Create recreational spaces for citizens in an environment providing health and well-being.



Financing strategy



Municipal loans and external financing

For the actual mandate (4 years), the Council allocated an overall budget of 75 million euros

Municipal budget and ESIF

The municipal government dedicated 200,000 euro for the international call for initial project development proposals.

The Madrid City Council already operationalized the first 16 million euros to implement the first phase of the project over a span of 600 hectares. EU funding: So far, 7M from NGEU and we are preparing for ESIF 21-27.

Private investments

Private sponsorship will be key. So far, we are implementing the project REPLANTAMADRID with the support of the initiative Madrid Futuro, an initiative started in the postcrisis context to build back better Madrid.

<https://replantamadrid.com/>

NEED to develop a enhance the financing strategy trough a better integration of financial schemes and dedicated financial instruments